



# HOTEL ON RIVINGTON

ROOMS AND AMENITIES

## HOTEL ON RIVINGTON

All of our spacious guestrooms and suites have an apartment-like atmosphere featuring Tempur-Pedic mattresses, plush Frette Linens, a premium mini-bar, HD flat screen TVs, iPod/iHome stereos, Italian bath amenities by Davines, beautiful Bisazza tile bathrooms with high-quality finishes, complimentary Wi-Fi, sexy windowed showers, and most rooms offer private balconies with seating for late night sunsets, or morning coffee.

Our higher room categories feature panoramic views of New York City, floor-to-ceiling glass exterior walls, private balconies with café tables and chairs, Japanese-inspired deep-soaking tubs, steam showers and many more unique luxury amenities.



# Terrace Suite

HOTEL ON RIVINGTON





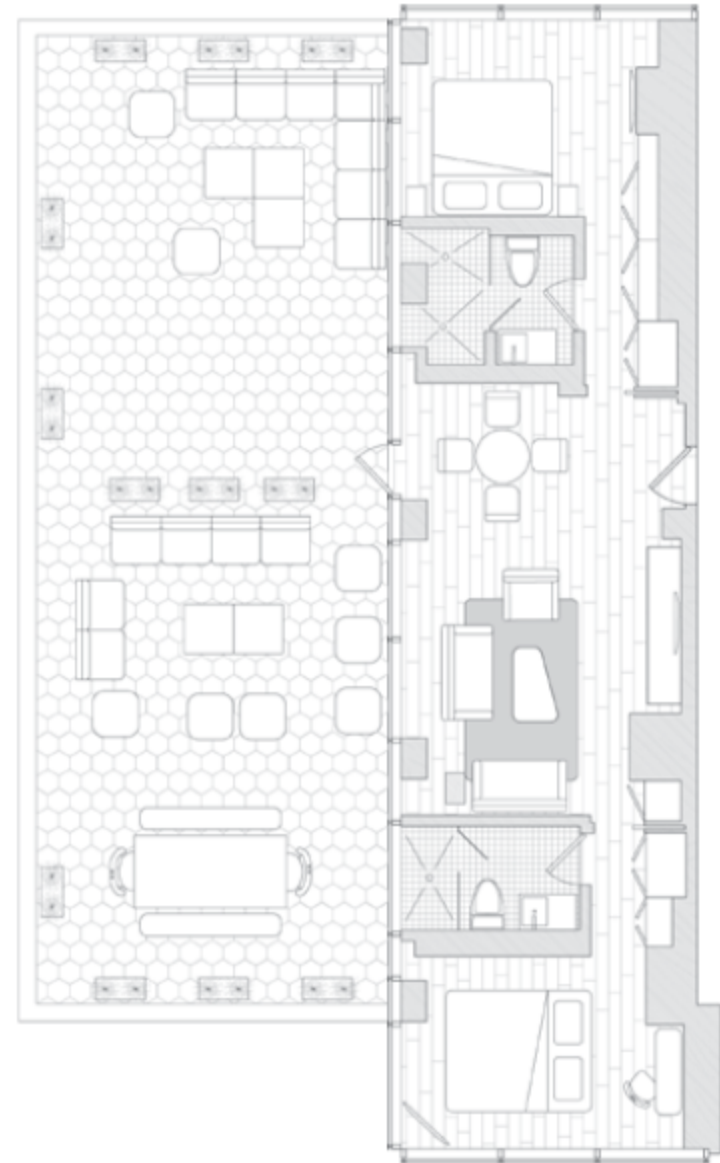
# Terrace Suite

## HOTEL ON RIVINGTON

This spacious two bedroom, two bathroom suite features a living area of 1,000 square feet. and a private 900 square foot terrace, large living room and dining room area. This suite is perfect for entertaining, be it hosting a reception or an intimate dinner. The view from the private terrace gives you a real sense of place in the heart of the Lower East Side of Manhattan. Spanning the length of the building, this suite has three different exposures to the city. Bedrooms are both of equal size, are located on each of the corners of the suite, have floor-to ceiling glass walls, and en suite bathrooms. Private events on the beautiful terrace can be arranged through our events department: [events@hotelonrivington.com](mailto:events@hotelonrivington.com).

### Amenities

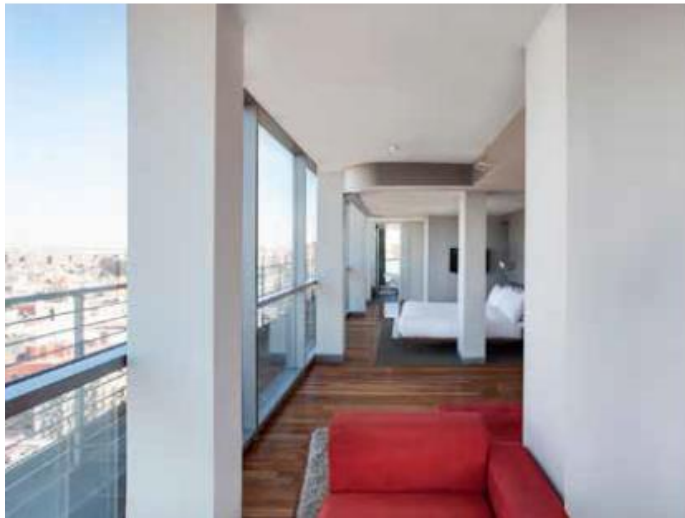
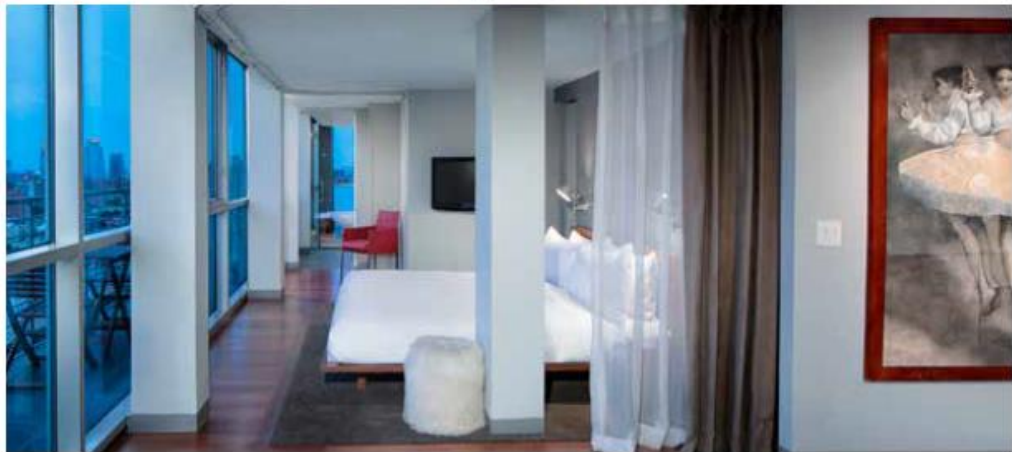
- Spacious NYC luxury hotel accommodations (1000 sq. feet. of living space and 900 sq. feet of private terrace)
- Sweeping Lower East Side rooftop views
- 900 sq. ft. private terrace facing East, North and West
- Large living room and dining room for entertaining
- Two Master bedrooms
- Two Full en suite bathrooms
- Corner placement of bedrooms with surrounding glass walls
- Premium Tempur-Pedic, 'soft-where-you-want-it, firm-where-you-need-it' Tempur-Contour Supreme King Sized beds
- Luxurious Frette plush, double twisted, 100% Egyptian combed cotton sheets and pillow cases
- Twice daily housekeeping service
- Complimentary high speed fiber-optic wireless internet with speeds up to 40 mbps up and down
- Modern, oversized, Bisazza tiled bathrooms with high quality fixtures by Zuchetti
- Glass-encased shower with sweeping views of the iconic NYC skyline
- Davines Italian bath amenities
- 100% all natural MicroCotton – amazingly soft, super-absorbent MicroCotton towels
- BOCA Terry – Microfiber bathrobes with plush terry lining
- HD flat screen televisions with video on demand
- Desktop work station
- Deluxe, oversized, fully stocked minibar
- iPod/ihome stereo system
- Daily New York Times newspaper delivered upon request
- Original artwork in each room creates an ever-changing art gallery for each visit
- In-room laptop safe
- Two line telephones with private voicemail
- Our Terrace Suite is located on the 7th floor





## The Owner's Suite

HOTEL ON RIVINGTON





# The Owner's Suite

HOTEL ON RIVINGTON

Perched high above it all on the 17th floor, this gorgeous specialty suite features accommodations for up to 10 people and a balcony that spans the entire north face of the building offering exceptional views of all of New York City.

The Master Bathroom features floor-to-ceiling windows on the north-east corner, allowing you to relax in the free-standing soaking tub while taking in the views of Brooklyn and beyond. The Master Bedroom includes a king-sized bed placed front and center in the room with privacy curtains surrounding it.

Ideal for groups or families, the second bedroom has two sets of full-sized bunk beds adding ample and comfortable accommodations for the group. A full second bathroom, living room, dining room, walk-in closet and over-sized minibar are just a few of the amazing amenities that come with our exclusive Owner's Suite. This suite can be booked for parties or events with prior arrangements through our team.

## Amenities

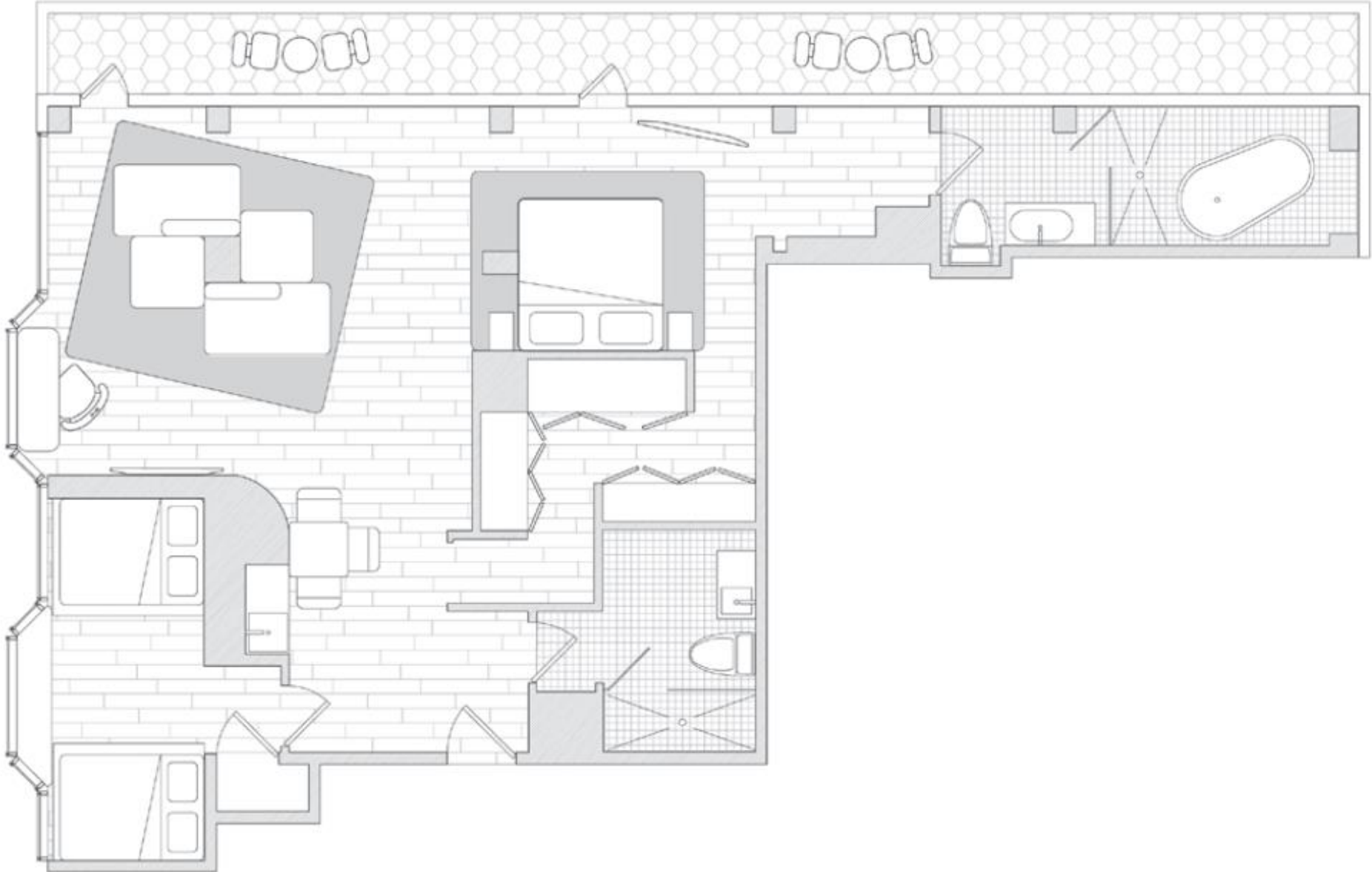
- Spacious NYC luxury hotel accommodations (1,000 sq. feet.)
- Sweeping 270 degree views of NYC across Brooklyn, Queens and Uptown Manhattan to the majestic Freedom Tower and Downtown skyline
- Extra-long balcony spanning the entire Northface of the hotel
- Living room and dining room area for entertaining
- North facing balcony provides views to SoHo, Downtown, Uptown, Brooklyn and beyond.
- Walk-in closet
- Premium Tempur-Pedic, 'soft-where-you-want-it, firm-where-you-need-it' Tempur-Contour Supreme King Sized bed
- Second Bedroom with two sets of full sized bunk beds
- Luxurious Frette plush, double twisted, 100% Egyptian combed cotton sheets and pillow cases
- Twice daily housekeeping service
- Clean and crisp Italian porcelain slate floors
- Complimentary high speed fiber-optic wireless internet with speeds up to 40 mbps up and down
- Modern, oversized, Bisazza tiled bathrooms with high quality fixtures by Zuchetti
- Master Bathroom featuring free-standing bathtub and separate shower with beautiful corner views
- Second Full Bathroom
- Davines Italian bath amenities
- 100% all natural MicroCotton – amazingly soft, super-absorbent MicroCotton towels
- BOCA Terry – Microfiber bathrobes with plush terry lining
- HD flat screen televisions with video on demand
- Desktop work station
- Deluxe, oversized, fully stocked minibar and kitchenette
- iPod/ihome stereo system
- Daily New York Times newspaper delivered upon request
- Original artwork in each room creates an ever-changing art gallery for each visit
- In-room laptop safe
- Two line telephones with private voicemail
- Our Owners Suite is located on the 17th floor

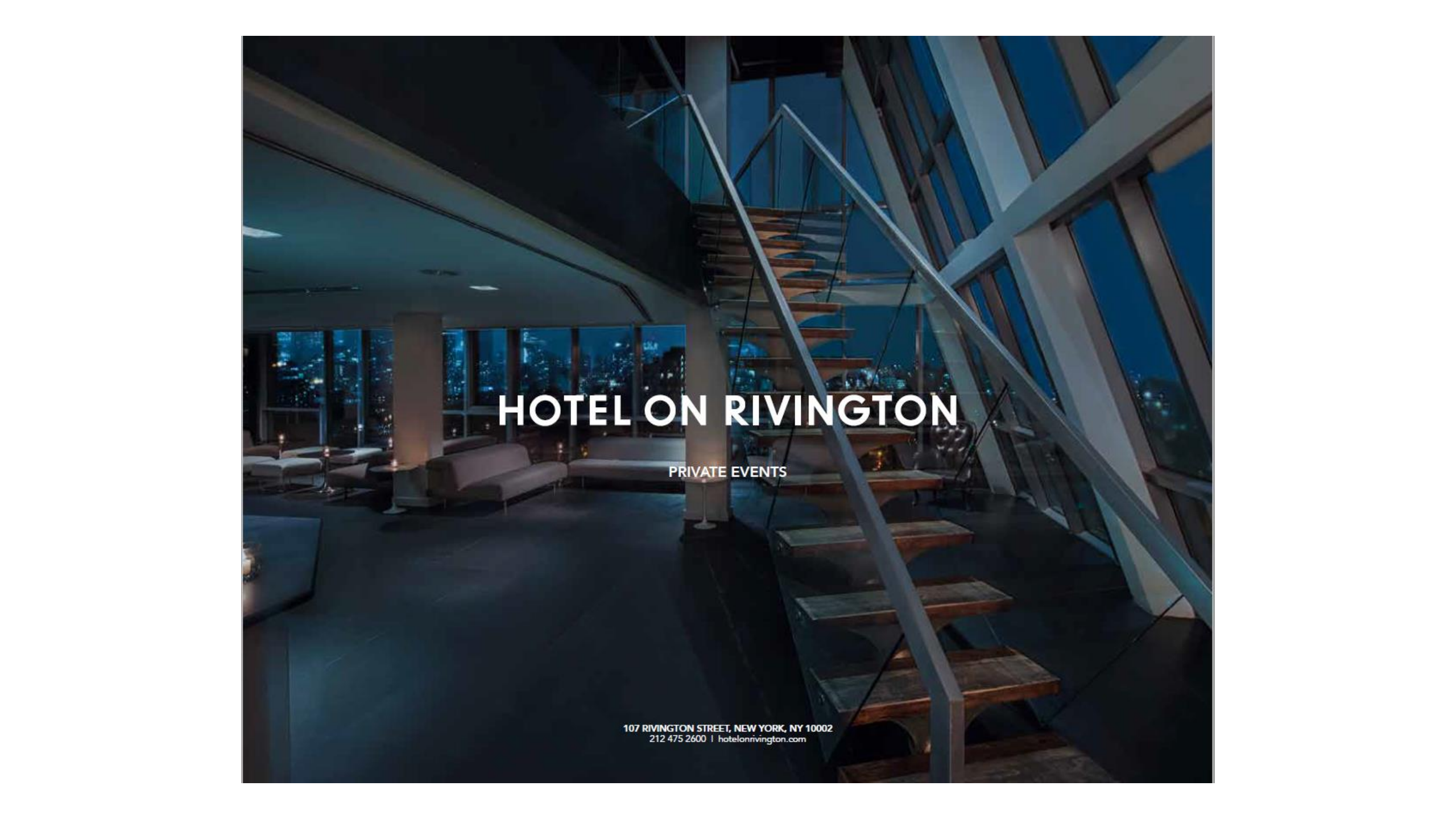




# The Owner's Suite

HOTEL ON RIVINGTON





# HOTEL ON RIVINGTON

PRIVATE EVENTS

107 RIVINGTON STREET, NEW YORK, NY 10002  
212 475 2600 | [hotelonrivington.com](http://hotelonrivington.com)



PENTHOUSE



THE PENTHOUSE has become an iconic location for any and all events in New York City. A unique gem in the heart of the historic Lower East Side, the Penthouse at Hotel on Rivington is a 3,200 square-foot triplex offering three exposures of New York City and a stunning 1,000 square-foot roof deck. The Penthouse is ideal for a 180 person cocktail reception, a dinner party of up to 70 guests, an inspirational board meeting, an exciting product launch, or as a backdrop for your next photo/video shoot. Amenities include floor-to-ceiling windows overlooking the city, roof deck, built-in bar, in-house residential-style lounge furniture, a state of the art sound system and space for a dance floor, making this an event planner's dream space for a one-of-a-kind event with impact.

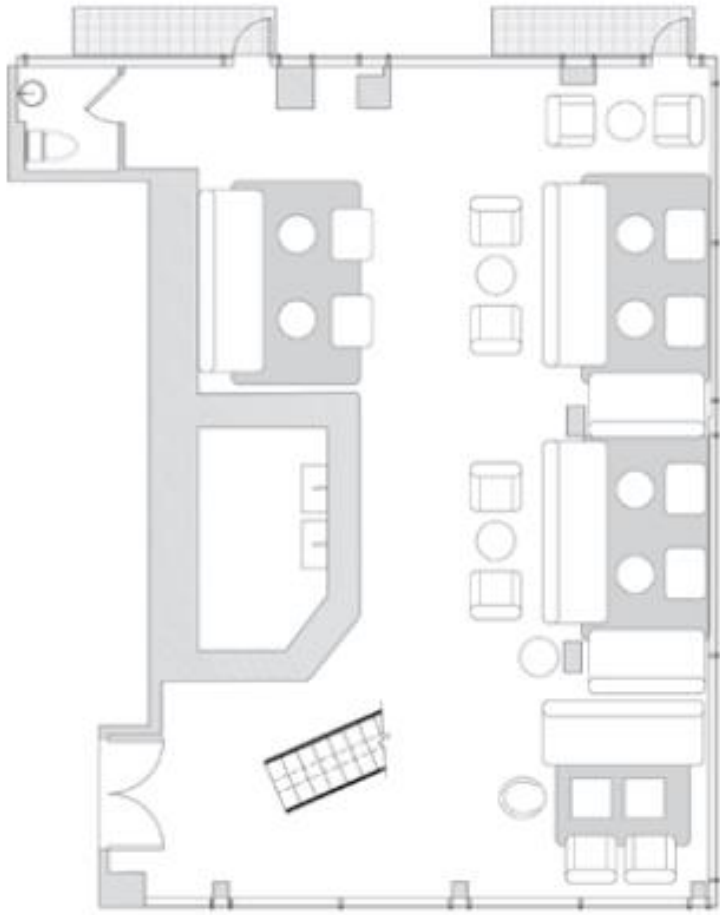


### Capacity Chart

Cocktail Reception	180 people
Buffet Reception	150 people
Theater Style	70 people
Classroom Style	60 people
Seated Dinner	70 people
U-shape	40 people
Boardroom	34 people



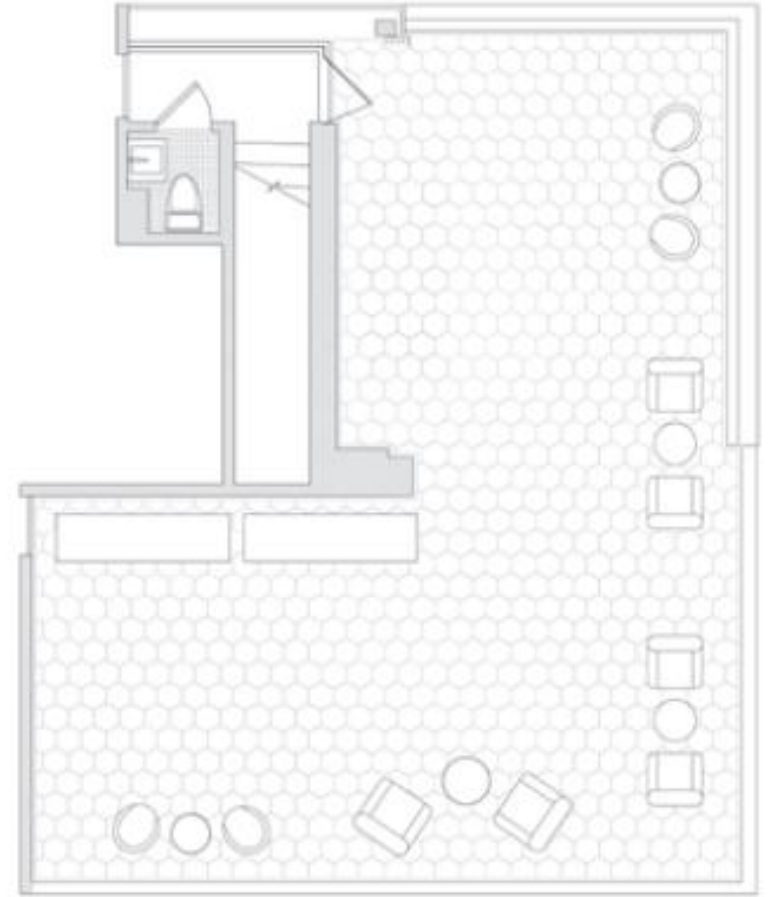
## Floor Plans



Floor 1



Floor 2



Rooftop Terrace