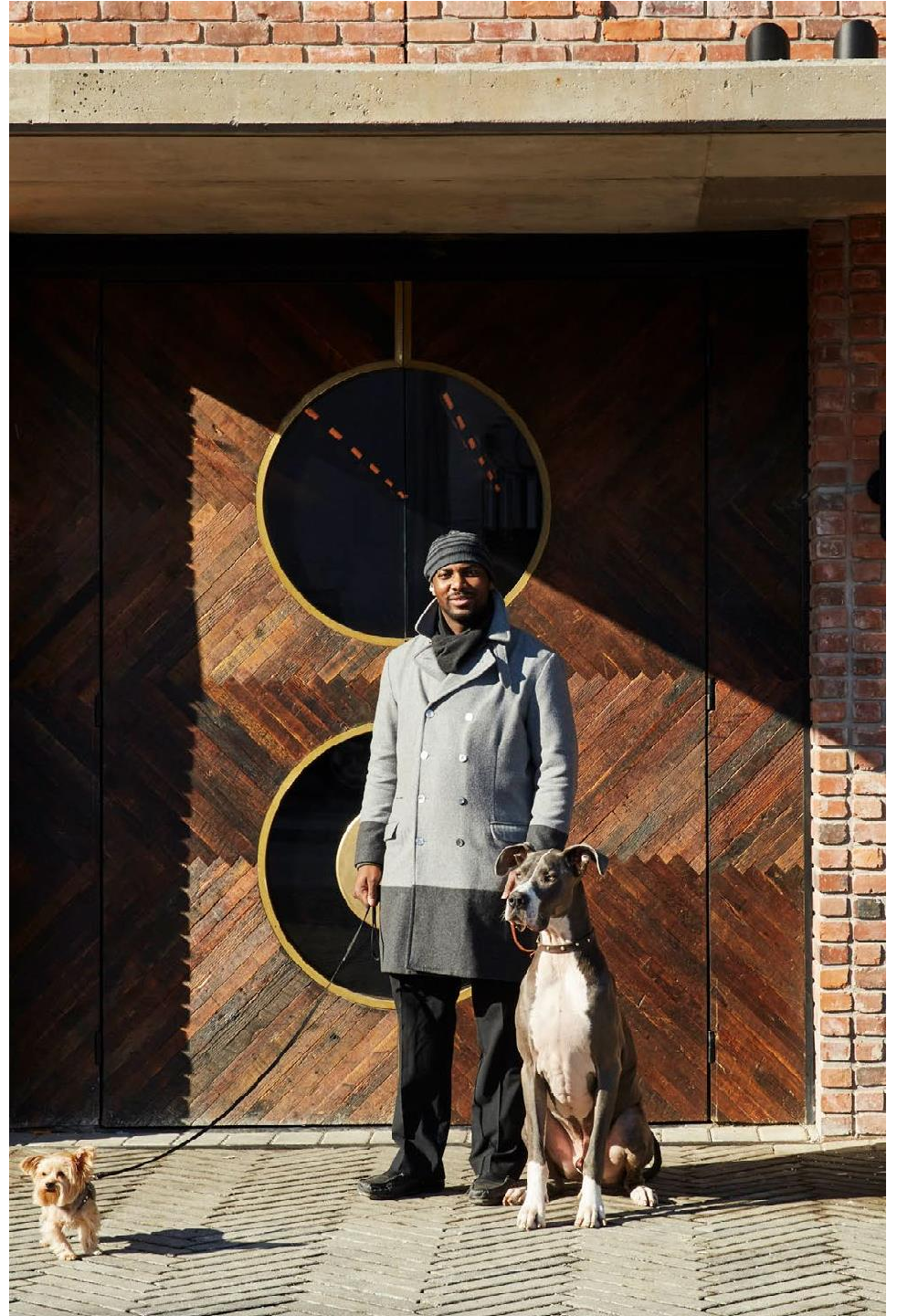




THE Williamsburg Hotel

Venue & Event Space

96 WYTHE AVE. BROOKLYN, NY



WELCOME

Located at the corner of North 10th Street & Wythe Ave, stands an eight-story Hotel that combines the perfect blend of the neighborhood's eclectic style with unmatched service & panaché. Each guest room is richly tiled and textured with authentic regional materials, floor-to-ceiling windows and its own individual pizzazz.

ACCOMMODATIONS

- 145 Guest Rooms
- 24-Hour Front Desk
- Connecting Rooms
- Bar & Lounge
- Central Air Conditioning
- Complimentary Wi-Fi
- Pet Friendly
- Self-Service Parking Nearby
- Shopping & Public Transportation Nearby
- Wake-Up Call
- Free Wi-Fi
- Laundry Service Available





LOCATION

Fifty years ago, Williamsburg was a neighborhood of industry. Today, it is a bustling community full of creatives, dreamers, and doers meeting for a drink and making things happen. Located on Wythe Avenue and North 10th Street, The Williamsburg Hotel stands at the nexus of history and history in the making.

TRANSPORTATION

L Train: 7 Minute Walk

G Train: 10 Minute Walk

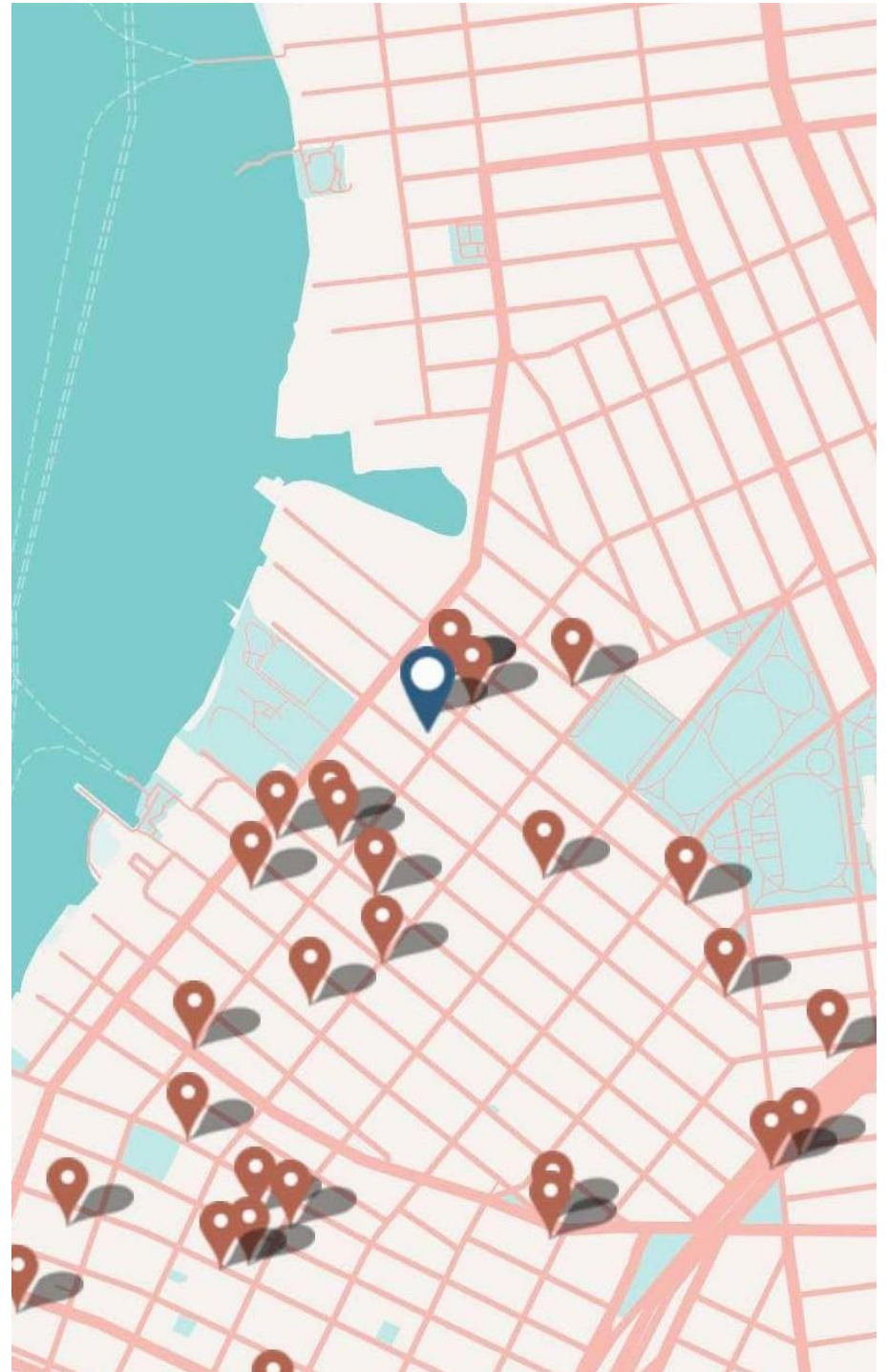
JMZ Train: 20 Minute Walk

East River Ferry: 8 Minute Walk

JFK Airport: 45 Minute Drive

La Guardia Airport: 30 Minute Drive

Newark Airport: 60 Minute Drive





PLANNING

Event Inclusions

STAFFING

- 1 bartender per 50 guests
- 1 server per 15 for plated meals
- 1 server per 20 for buffet or family style meals

FURNITURE

- 60in. round tables
- 6 ft. rectangular tables
- 8 ft. rectangular tables
- Black Chiavari chairs

TABLEWARE

- White ceramic plateware
- Glassware
- Silverware
- White floor-length table linens
- White linen napkins
- Accent candles







VENUES

Ballroom

6,550 SQ. FT.

Up to 300 guests for sit down dinner

Up to 250 guests for dinner and dancing

Up to 400 guests for theatre or reception style



TWH Restaurant

1,250 SQ. FT.

Up to 25 guests for family style dinner



Lobby Bar

3,000 SQ. FT.

Up to 100 guests for reception style (semi-private)



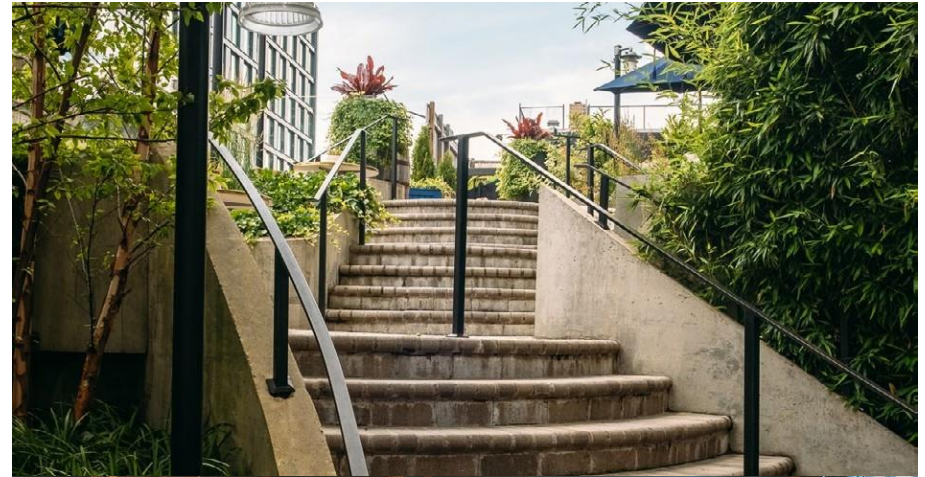


VENUES

Outdoor Patio

1,050 SQ. FT.

*Up to 30 guests for terrace seating
Up to 50 guests for reception style*



Mirror Bar

1,600 SQ. FT.

*Up to 75 guests for sit down dinner or meetings
Up to 120 guests theatre or reception style*



The WaterTower

960 SQ. FT.

*Up to 28 guests for sit down dinner or meetings
Up to 70 guests for reception style*





VENUES

Rooftop

10,000 SQ. FT.

Up to 300 guest reception style

Up to 150 guests for semi-private reservations

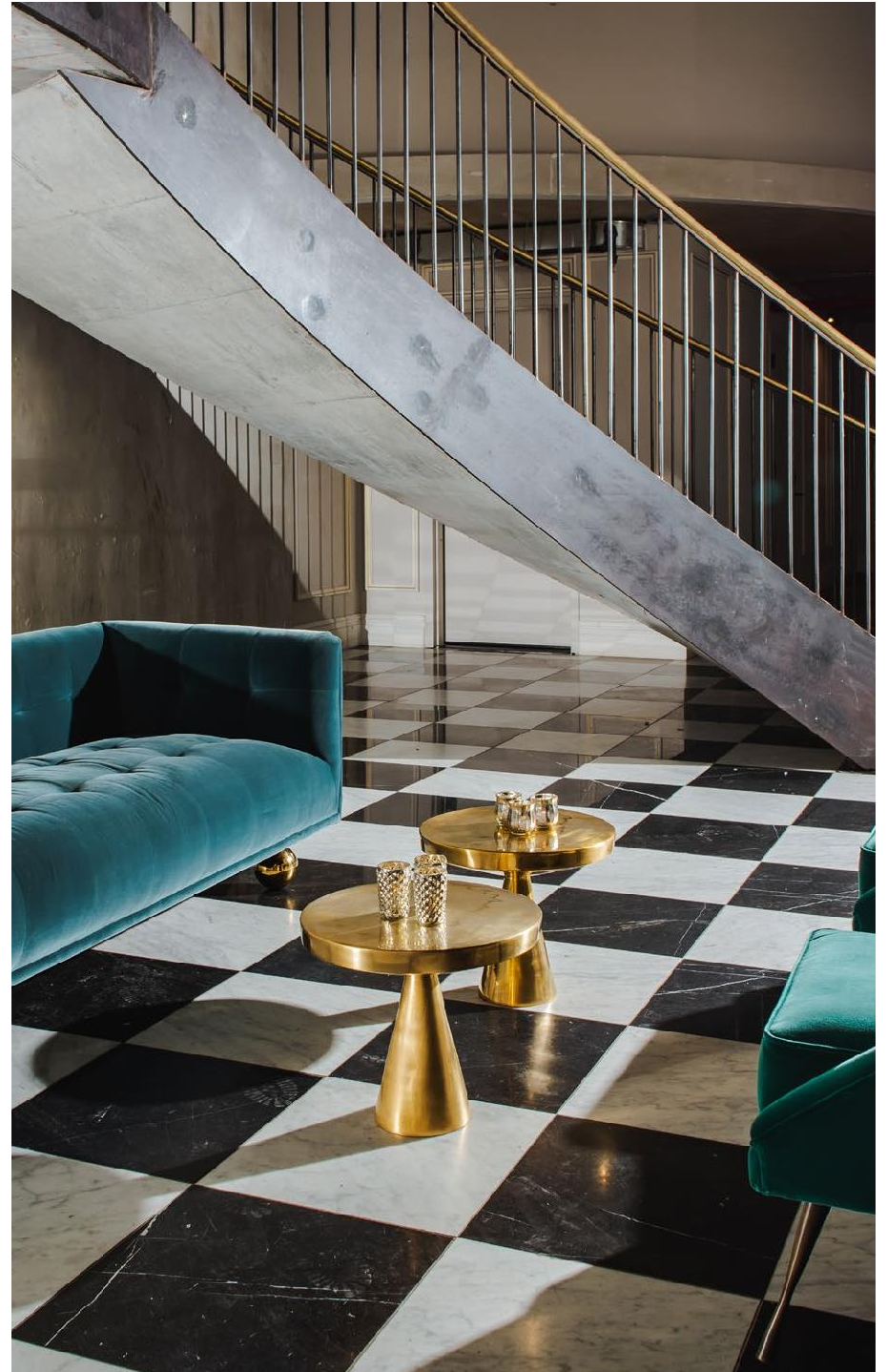


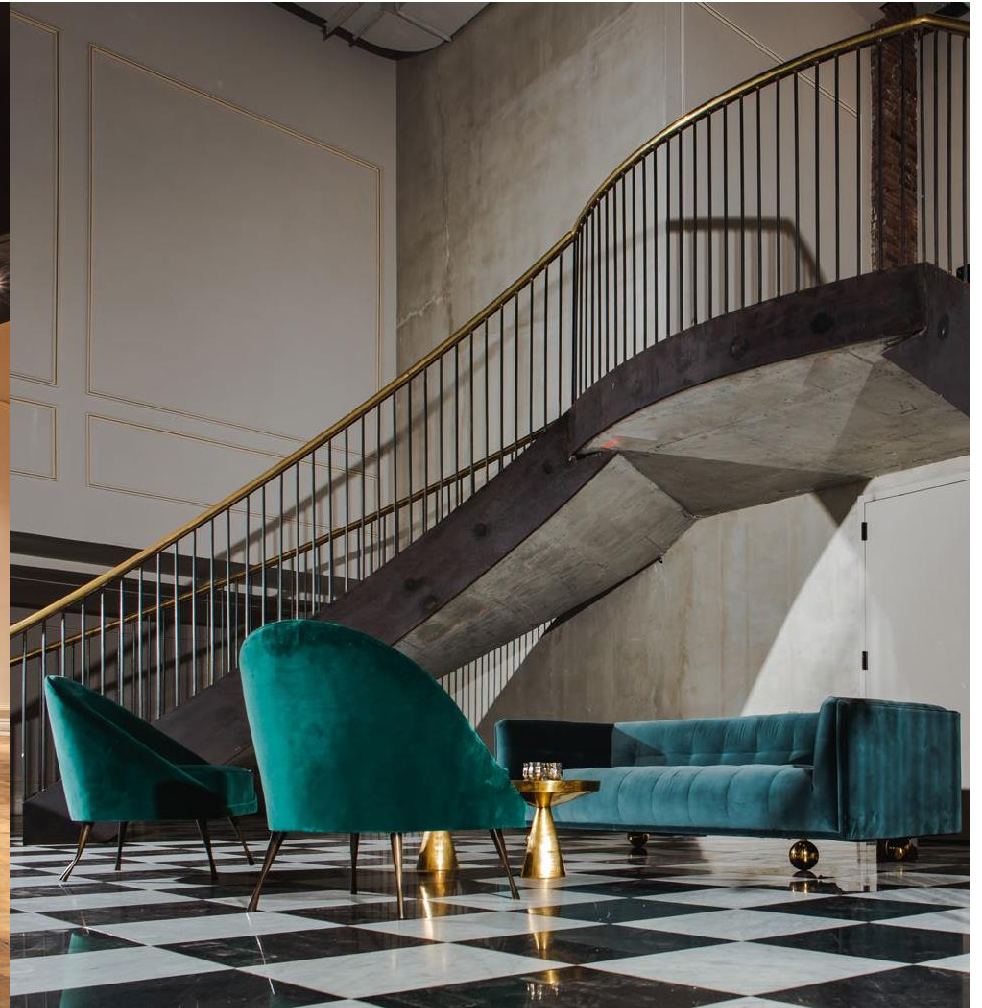


BALLROOM

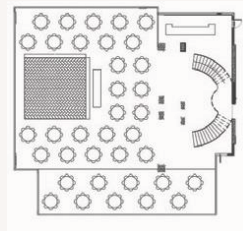
The ballroom is our largest and most versatile space. Rich in character and luxury with 30-foot-tall soaring ceilings, chandeliers, sweeping staircases and parquet & marble floors. The Ballroom is a stately event space with shine and swagger. The space is ideal for conferences, galas, launches, entertainment venues and weddings.

6,550 SQ. FEET

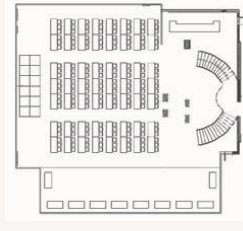




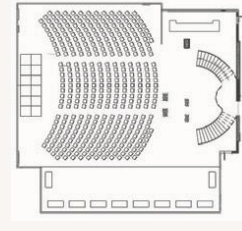
Ballroom Configurations



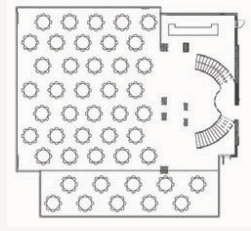
DINNER & DANCING
UP TO 250



CLASSROOM-STYLE
UP TO 170



MEETINGS, KEYNOTES
UP TO 400



SEATED DINNER
UP TO 300



TWH RESTAURANT

The restaurant is a 50-seat American bistro that invites diners to experience a menu that celebrates locally sourced vegetables, roots and herbs. Under the guidance of Chef Alberto Gomez, the restaurant's vegetable-forward menu emphasizes fresh, innovative, and seasonal fare. It's casual elegance, culinary style, and appreciation highlights the benefits of eating natural food.

1,250 SQ. FEET



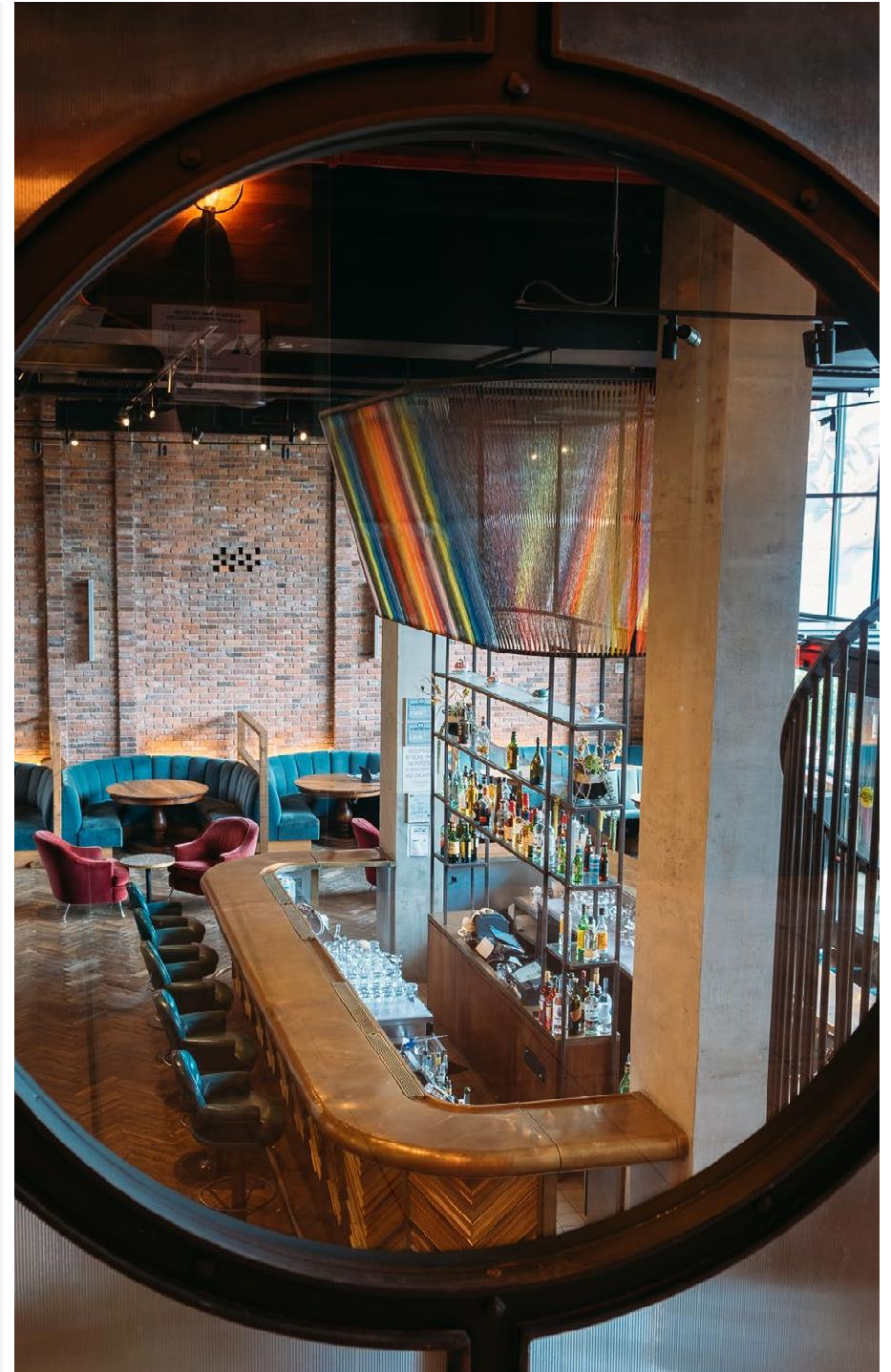




THE LOBBY BAR

The Lobby Bar corners the market on playful atmosphere and serene sophistication. Featuring local street artist Eric Reiger's colorful installation, reclaimed hardwood floors, and exposed industrial detailing, the Lobby Bar is perfect for anything from intimate cocktails to lavish events.

3,000 SQ. FEET





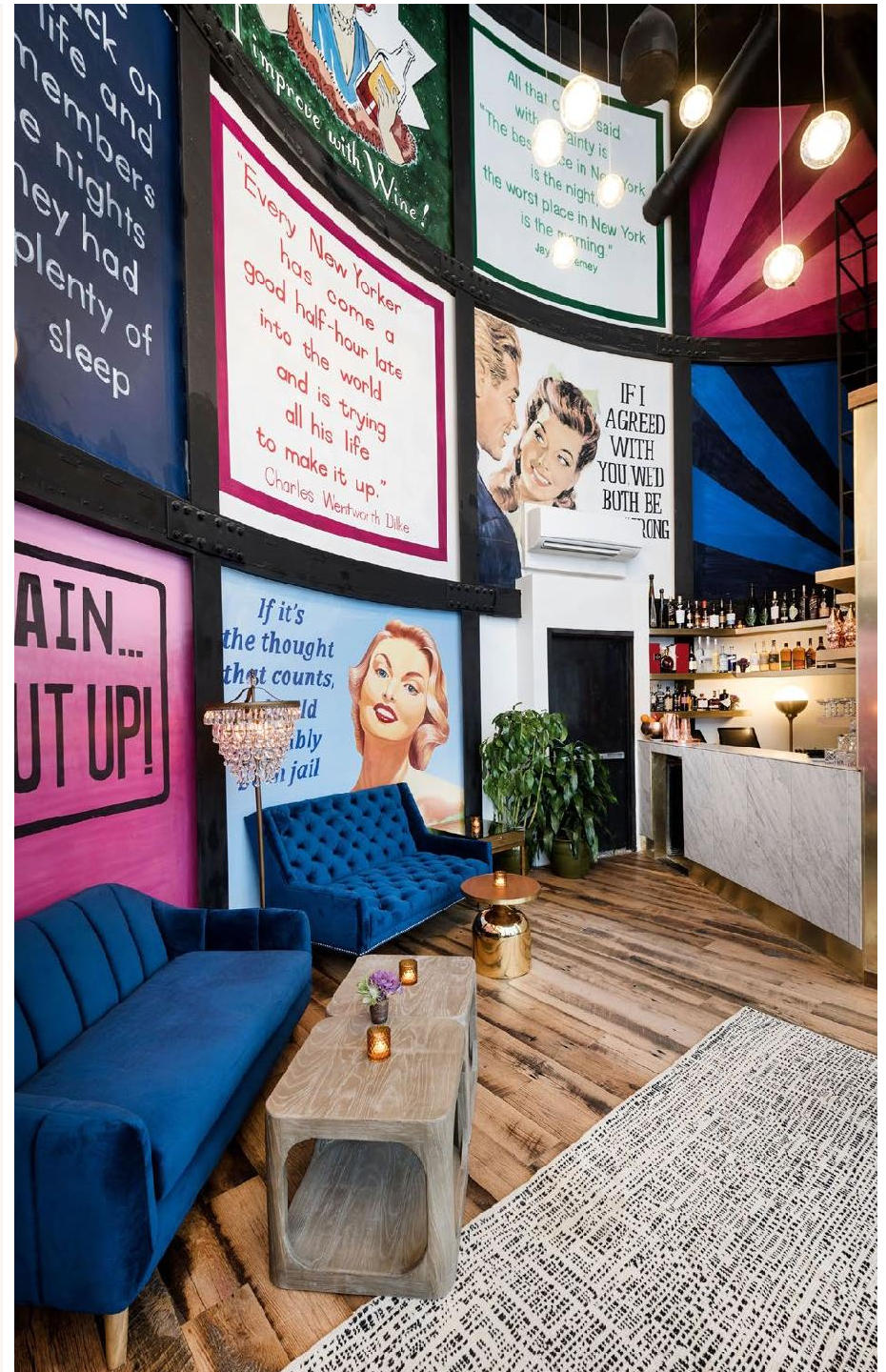




THE WATER TOWER

Breathtaking views of Brooklyn, the East River, and Manhattan's sparkling skyscrapers, The Watertower is sublime for special occasions and much more. Experience this bird's-eye view and bespoke catering options.

960 SQ. FEET





My advice
I DON'T USE IT ANY MORE

If I can make it there
I'll make it anywhere
It's up to you
New York, New York
Frank Sinatra

Improve with Wine!

The only lie I ever told you is that I liked you when I already knew I loved you.

No one looks back on their life and remembers the nights they had plenty of sleep

Every New Yorker has come into the world a good half-hour into the world and is trying to make it up all his life
Charles Wentworth

I'm not saying I'm
WONDER WOMAN
I'm just saying no one has seen the two of us in a room together

DEAR BRAIN...
PLEASE SHUT UP!

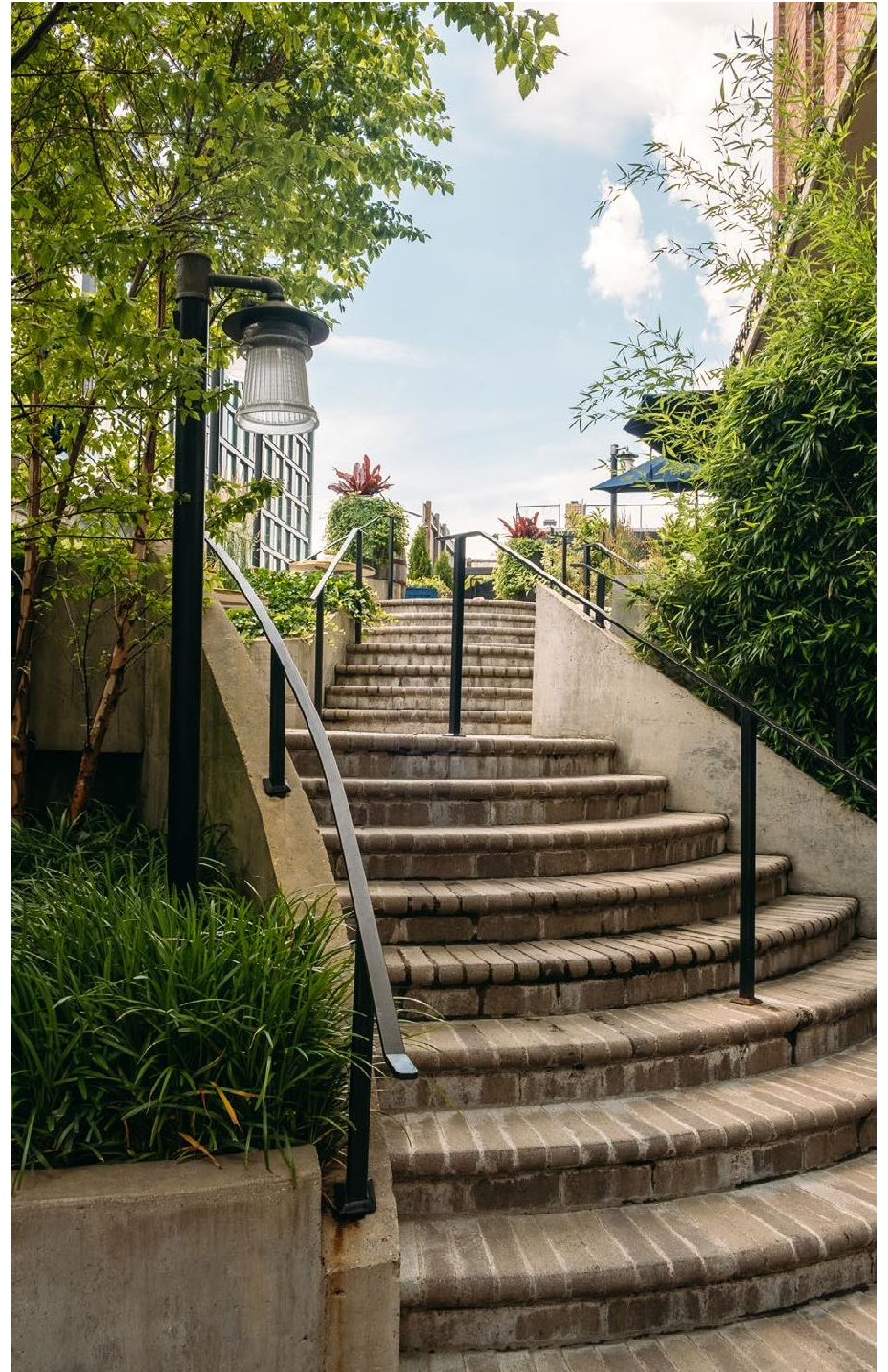
If it's the thought that counts, I should probably be in jail



OUTDOOR PATIO

The Outdoor Patio is an open courtyard with built in seating and beautiful landscaped surroundings. The Outdoor Patio offers casual get togethers, outdoor dining and receptions while taking in the sights of vibrant Wythe Ave.

1,050 SQ. FEET





MIRROR BAR

The Mirror Bar, a hidden gem in The Williamsburg Hotel, is an intimate and chic enclave featuring 1,600 square feet of peaceful ambiance graced with modern design details. An unconventional venue perfect for meetings, dinners, and celebrations.

1,600 SQ. FEET

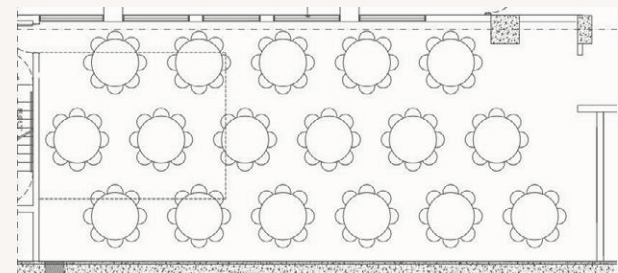




Mirror Bar Configurations



**UP TO 120 GUESTS FOR THEATRE OR
RECEPTION STYLE**



**UP TO 75 GUESTS FOR SIT
DOWN DINNER OR MEETINGS**

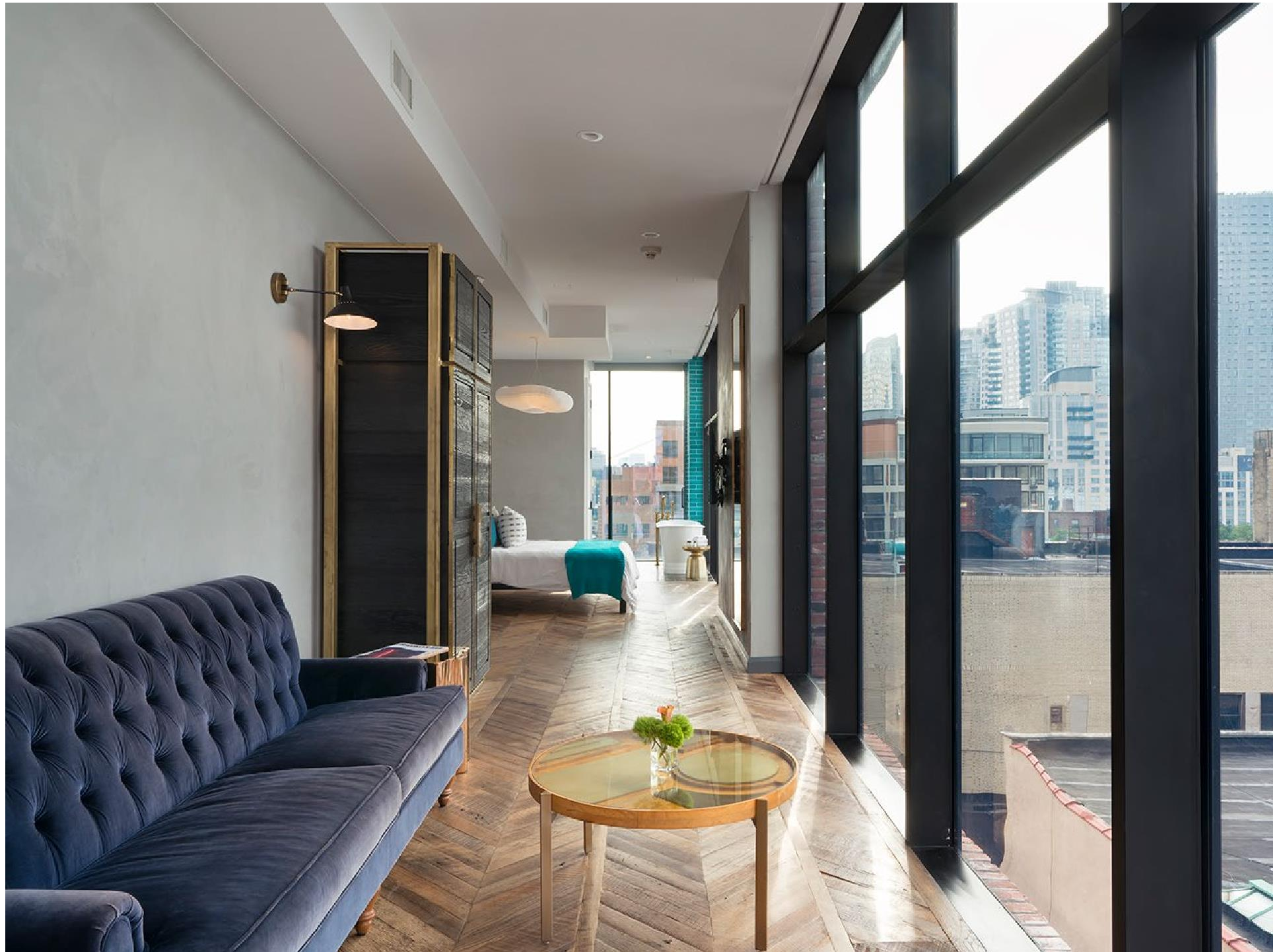


SKYLINE SUITE

The Skyline Suites are located on the west side of the Hotel, overlooking the East River. The floor to ceiling windows give an unobstructed panoramic view of the city skyline. The Skyline Suite is perfect for intimate gatherings such as bridal parties or meetings of up to 10 guests.

550 SQ. FEET



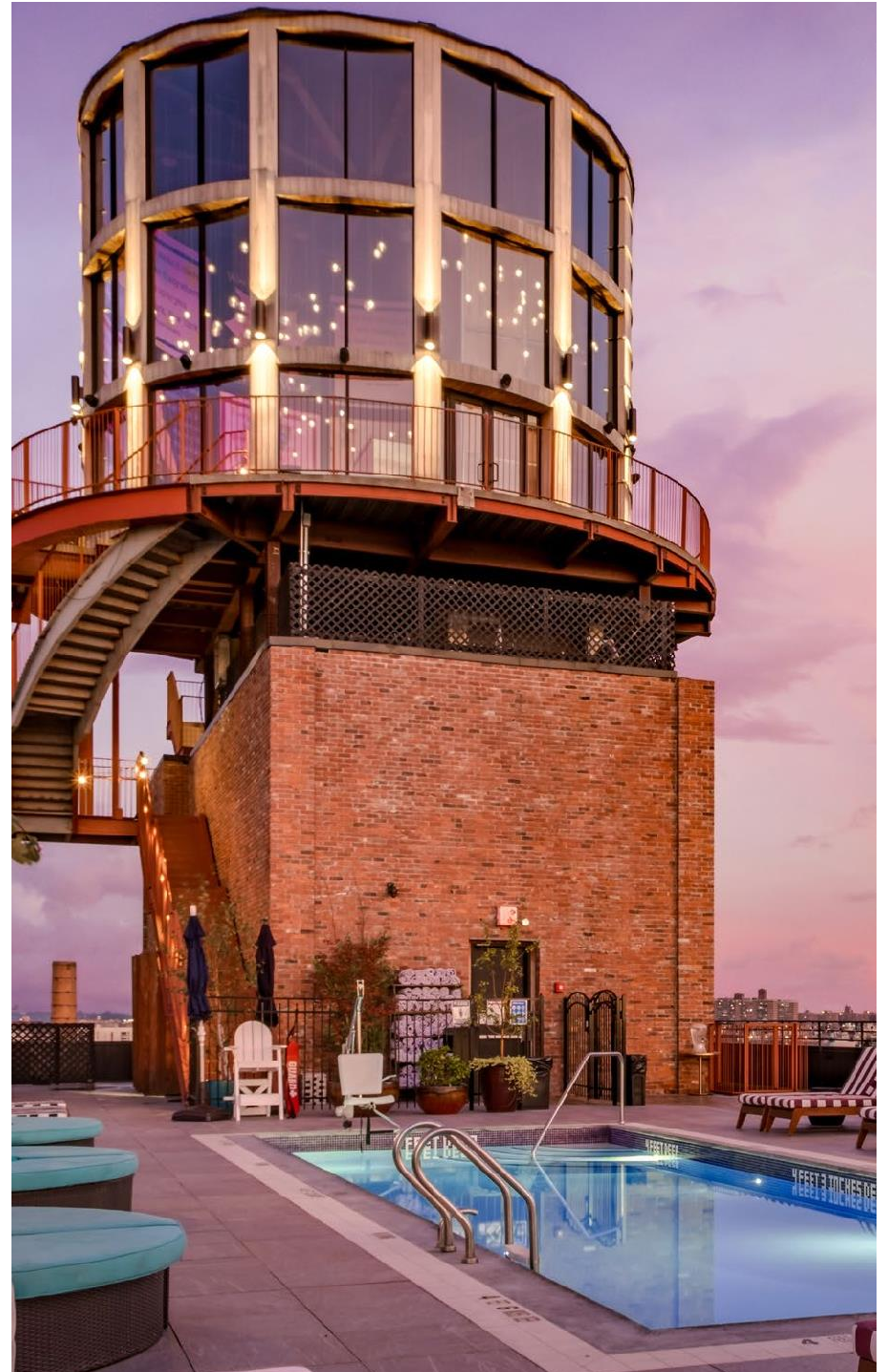




ROOFTOP

The Rooftop pool and lounge features 360 degree views of NYC, alfresco poolside dining and deliciously crafted cocktails.

10,000 SQ. FEET







Contact Us

96 WYTHE AVE.
BROOKLYN, NY 11249

718.362.8100
EVENTS@THEWILLIAMSBURGHOTEL.COM