



*The Carlyle*

A ROSEWOOD HOTEL  
NEW YORK

2024 FLOORPLAN & CAPACITY GUIDE

## CAPACITIES & DIMENSIONS

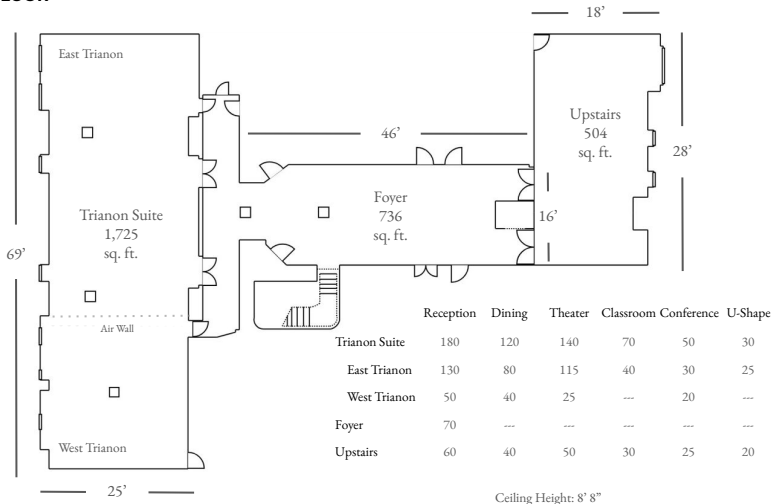
	Sq Ft	Size (Ft)	Ceiling Height	Reception	Dining	Theater	Classroom	Conference	U-Shape
Trianon Suite	1,725	69' x 25'	8'8"	180	120	140	70	50	30
East Trianon	1,100	44' x 25'	8'8"	130	80	115	40	30	25
West Trianon	625	25' x 25'	8'8"	50	40	25	---	20	---
Foyer	736	46' x 16'	8'8"	70	---	---	---	---	---
Upstairs	504	28' x 18'	8'8"	60	40	50	30	25	20
Café Carlyle	988	38' x 26'	8'8"	100	60	80	---	---	---
Bemelmans Bar	672	32' x 21'	8'1"	78	30	---	---	---	---
Dowling's at The Carlyle	1,350	45' x 30'	13'	150	70	---	---	---	---
Semi-Private Room	336	24' 14'	13'	30	20	---	---	20	---

\*The Foyer is a common area between the Trianon and Upstairs.

\*\* Room capacities do not reflect space for audio-visual or miscellaneous equipment, entertainment or dancing.

*The Carlyle*  
BANQUET SPACES

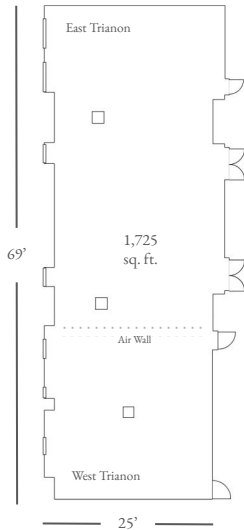
## SECOND FLOOR



## TRIANON SUITE



# TRIANON SUITE



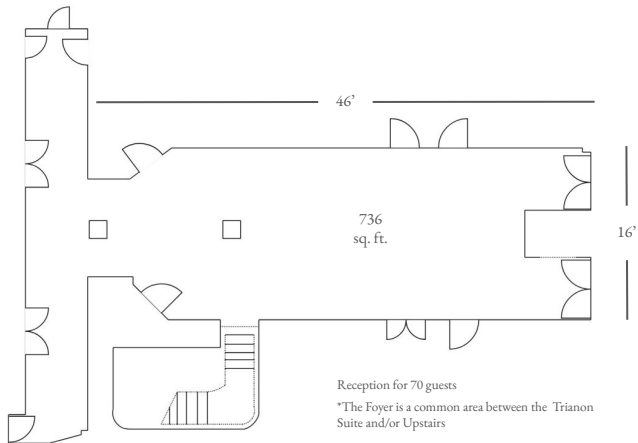
	Reception	Dining	Theater	Classroom	Conference	U-Shape
Trianon Suite	180	120	140	70	50	30
East Trianon	130	80	115	40	30	25
West Trianon	50	40	25	---	20	---

Ceiling Height: 8' 8"

## FOYER



## FOYER



Reception for 70 guests

\*The Foyer is a common area between the Trianon Suite and/or Upstairs

Ceiling Height: 8' 8"



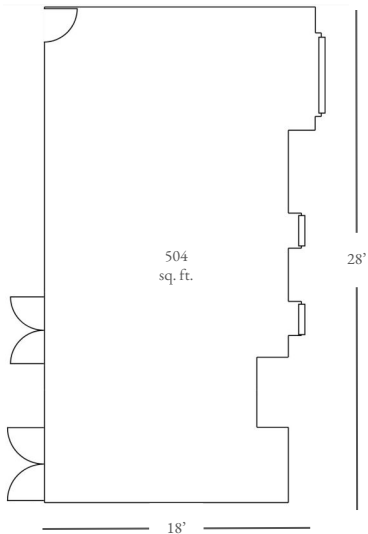
**UPSTAIRS  
INSPIRED BY BEMELMANS BAR**



## UPSTAIRS INSPIRED BY BEMELMANS BAR

Reception	Dining	Theater	Classroom	Conference	U-Shape
60	40	50	30	25	20

Ceiling Height: 8' 8"



*The Carlyle*  
DINING OUTLETS

## CAFÉ CARLYLE



## CAFÉ CARLYLE

Reception Dining Theater Classroom Conference U-Shape

100

60

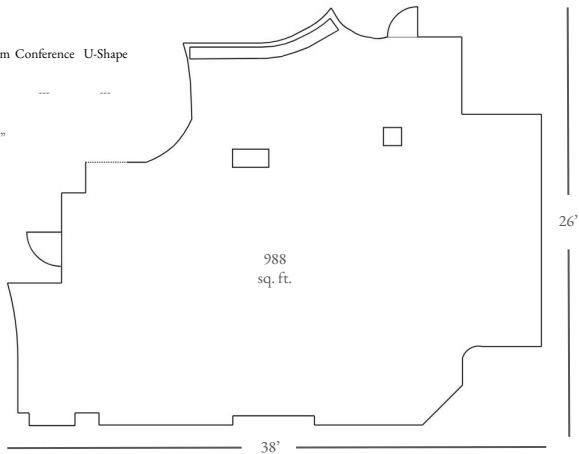
80

---

---

---

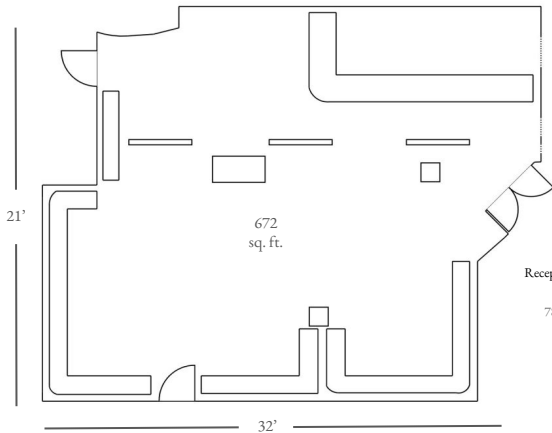
Ceiling Height: 8' 8"



## BEMELMANS BAR



## BEMELMANS BAR



Reception	Dining	Theater	Classroom	Conference	U-Shape
-----------	--------	---------	-----------	------------	---------

78	30	---	---	---	---
----	----	-----	-----	-----	-----

Ceiling Height: 8' 1"

## DOWLING'S AT THE CARLYLE





## DOWLING'S AT THE CARLYLE

Reception    Dining    Theater    Classroom    Conference    U-Shape

150

70

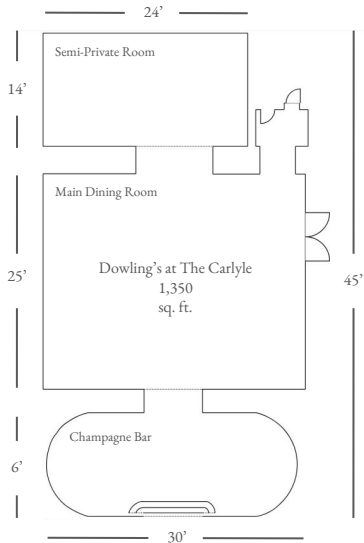
---

---

---

---

Ceiling Height: 13'



## SEMI-PRIVATE ROOM



## SEMI-PRIVATE ROOM

Reception Dining Theater Classroom Conference U-Shape

30

20

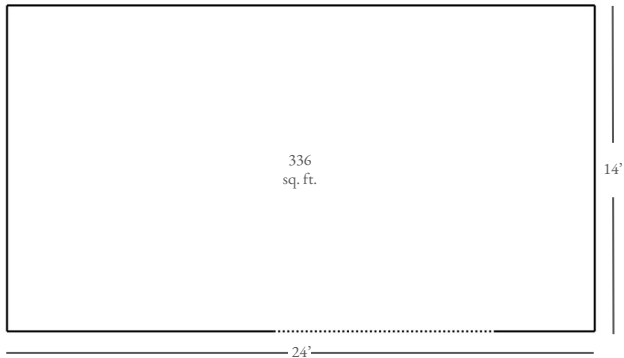
---

---

20

---

Ceiling Height: 13'





*The Carlyle*

A ROSEWOOD HOTEL  
NEW YORK